

Q Light Quantum Generator Get The Energy Of Life Force & heal your body!

<https://www.youtube.com/watch?v=DvdXbYYIhkY&feature=youtu.be>



Q Light Quantum Generator - Get The Energy Of Life Force & heal your body! - YouTube

Enjoy the videos and music you love, upload original content, and share it all with friends, family, and the world on YouTube.
www.youtube.com

**Congratulations !
with your amazing new Q Light
Quantum Generator.
We wish you great health and happiness!**

Q LIGHT Quantum Generator hit the world market in november 2020 and has never before been released for public interest. The time is now ready. We proudly presents this amazing device that creates results beyond any other light healing device or therapeutic cold laser existing today.

The Russian patented unique Quantum Generator, consists of a light generation unit with ultra low-power LEDs and a container of optical material, that accumulates the energy of "life force".

The passing light through the container triggers the release of the "life force" energy flow, which is able to fill you with vital energy and tranquility, giving tone to your physical and energy body, balancing and discovering your hidden life energy and life force. Life energy helps to enjoy life, and life force is the ability to subordinate one's will to gain hope, love, dream, overcome pain and anger.

The impact is produced by a much richer spectrum of light and color than the eyes are able to see.

This spectrum is in every person inside. And this is a much higher frequency of energy than in physical perception, therefore, the effect is not speculative, but visual.

THE SCIENCE BEHIND:

The alpha-rhythm quantum oscillator acts on the neurons of the cortex, subcortical and basal structures of the brain to change their electrical activity. As a result, there is a change in the interaction of neurons within the neural network with the compensation of cognitive and psycho-relaxing disorders. Quantum stimulation reduces pathological hemispheric asymmetry and reduces emotional disorders, causes restructuring of the pre- and postsynaptic apparatus. As a result, the efficiency and direction of interneuronal connections are modified, which causes structural and functional changes in the motor cortex, activates the processes of brain neuroplasticity and induces the formation of a new system of interhemispheric connections. Along with the relief of pain and improvement of microcirculation of brain tissue, the processes of reparative regeneration of damaged tissues and their metabolism are stimulated. The main therapeutic actions of a quantum generator are analgesic, vasoactive, regenerative, anti-edematous, neuromiostimulating, trophic effects.

With the active normalization of the alpha rhythm of the brain in humans, the following positive changes are observed:

Blood supply to the brain is improved by at least 70% within five minutes of treatment with the generator in the back of the head in pulsed mode B. Recovery processes in the body are accelerated by 8–10 times.

For example, a person who has had hepatitis, with good circumstances, needs at least 6 months to recover. Subject to the use of the generator, which allows to strengthen the alpha rhythms, the rehabilitation period is reduced by 8-10 times. There is a harmonious redistribution of energy from those places where there are muscle and energy blocks. As a result, energy begins to circulate freely throughout the body.

"Opening the chakras." It opens access to huge amounts of information. When the brains work in alpha rhythm you receive answers to your question from the storerooms of the Universe itself. When our brain works in the alpha rhythm, creative ideas, inspirational thoughts come to us, intuition sharpens, which allows us to find new, unexpected solutions to problems. It becomes possible to reprogram human consciousness in the right direction when the brain is actively working in the alpha rhythm. When tuning the brain to Schumann frequencies, a person gets access to inexhaustible sources of information and the life energy of our planet, which can be successfully used to harmonize both relationships between people and the consciousness of each person. The first who discovered the special low and ultra-low vibration frequencies of the Earth's atmosphere was Nikola Tesla.

These frequencies are the reference signal for the **pineal gland**. Since the hormone of joy and relaxation — serotonin and melatonin, is produced by the pineal gland, the third eye is not mentioned by chance, because it is also a source of spiritual peace. The pineal gland is the seat of the human soul, or 'the all-seeing eye that has deepened into the brain. As soon as the frequency is "caught" by the brain, the coordinated work of the left and right hemispheres begins, which control all the hormones produced in the body that are necessary to maintain active longevity and creativity. The pineal gland begins to produce hormones serotonin and melatonin, which creates a stable state of health, youth and longevity for our body. This also activates the control function of the thyroid gland, and the entire human body begins to work coherently in a single rhythm, and diseases of all kinds begins to go away. With headaches, migraines, the circulatory system of the brain should be activated in the pulsating light mode in accordance with the Alpha rhythms of the brain.

INSTRUCTIONS FOR USE:

The patented original quantum generator consists of a light generation unit with ultra low-power LEDs and a container of optical material that accumulates the energy of "life force". The passing light through the container triggers the release of the "life force" energy flow, which is able to fill you with vital energy and tranquility, giving tone to your physical and energy body, balancing and discovering your hidden energy and mental abilities. The generator allows you to raise and powerfully strengthen your vitality.

Vitality includes two concepts: life energy and life force. Life energy helps to enjoy life, and life force is the ability to subordinate one's will to gain hope, love, dream, overcome pain and anger. The loss of vitality leads to serious consequences of the physical and mental plan.

To practice, turn on the generator for 5-10 minutes in one of the three proposed modes, then close your eyes, try to relax your body, mentally watching the body. (The use of the generator should not exceed 10 minutes of exposure per patient per day!)

Concentrate on your even calm breathing. Feel the energy filling your body as it flows through the energy channels. With the help of a generator, you can control and direct energy to those parts of your body where you feel anxiety or pain. After some time, more often in a few hours or the next day (each one is individual!) You will feel how you are filled with a surge of new energy to restore your vitality.

Through energizing the life force, we can create positive changes in all areas of our life!

Procedures should be performed when the patient is in a relaxed state with closed eyes. Do not expose the eyes for the light!

Never, under any circumstances, attempt to open the container of the optical material generator that accumulates the energy of the "life force".

The led source has a power of 3 watts, a light flux of 250 Lumens.

One AA battery, with a nominal voltage of 1.5 V in the galvanic cells ensures the operation of the generator for 8 hours of continuous operation.

After the battery life of the led power source expires, replace it by unscrewing the back cover, which has a yellow button to start the generator.

By clicking on the button will select the operation of the generator in one of three modes.

The operating modes of the generators are controlled by pressing the yellow button on the back cover of the led source.

The quantum generator operates in three modes.

Mode A. Less bright light. Moderate filling of the "life-force". Treatment of the solar plexus area, venous abnormalities in the legs and thighs. 10 minutes per day of exposure per patient.

Mode B. Flashing light with a frequency of 14 pulsations per second (corresponds to the optimal frequency of "alpha rhythms" to normalize the rhythms of brain activity). Treatment of the occipital part of the head for 5 minutes per day of exposure per patient.

Mode C. brighter light. Increased filling with "life force". 5 minutes per day of exposure per patient. Treatment of pain areas on the body.

EFFECTS OF THE QUANTUM GENERATOR:

1. THE BRAIN. On the brain (in a "blinking" mode, which coincides with the Alpha rhythm of brain activity): Normalizes cerebral circulation and metabolic processes in the tissues of the brain. This allows you to qualitatively improve the functioning of the central nervous system. First, the work of the right and left cerebral hemispheres is synchronized. This allows us to put in order both our thoughts and emotions. Secondly, the work of our brain is synchronized with the electromagnetic vibrations of the Earth.

When the brain works in an alpha rhythm, creative ideas, inspired thoughts come to us, intuition sharpens, which allows us to find new unexpected solutions to life's problems. There is a real opportunity to deal with your problems, such as excess weight or insomnia, anxiety and stress, bad habits, migraines and much more. Since the brain is the main control system of the body and all the processes that take place in it, the normalization and qualitative improvement of brain activity results in the optimization of the work of all organs, systems and tissues. The body, in fact, begins to restore the natural mechanisms of self-regulation laid down by nature, which we lose over the years due to an unhealthy lifestyle, poor ecology, the quality of food and drinking water.

All recovery processes in the body are accelerated many times (8-10 times). So, if a person who has recovered from viral hepatitis and who has been competently and successfully treated needs at least six months to recover, then when using a quantum generator, which makes it possible to strengthen brain alpha rhythms, the rehabilitation period is reduced by 8-10 times. The same happens to the skin, muscles, endocrine system and other organs and tissues.

Restoration of conduction of the neural network of the brain. Activation of blood circulation in the brain. Positive energy fields of a quantum generator act on the brain tissue, which leads to activation of regional cerebral blood flow, improvement of brain metabolism, and changes in its bioelectric activity.

Increased production of **SEROTONINE** (People feel happier and with much more energy, good health & very good memory)
Good mood becomes the norm, without amplitude jumps from anger to unrestrained joy.

2. THE MERIDIANS. On the energy system of the body (in all operating modes of the generator): According to the concepts of oriental medicine, there is vital energy ("Qi" for the Chinese, "Prana" for the Indians, other peoples have other names), which provides a "margin of safety" for our body, makes it possible to resist diseases and adverse environmental conditions, strength and performance, makes it possible to feel the taste of life and enjoy the life process. The supply of this vital energy and the correctness of its circulation ultimately determine the quality and duration of our stay in this world.

This energy must constantly, freely and evenly circulate along the central energy channel running along the spine, as well as along special paths - the meridians. Any diseases and malfunctions in the work of the body begin there and then, where the free flow of energy along the meridians and the central channel is disturbed and, as a result, there is a deficit or stagnation of energy in certain organs and systems.

Where there is stagnation of energy, there is stagnation of blood and lymph circulation, muscle blocks and clamps, spasms of blood vessels, intestinal walls, glandular ducts, muscles, etc. As a result, toxins, metabolic products, and oxygen deficiency accumulate in these places. tissue nutrition, metabolic processes are disrupted. It is here that foci of inflammation arise, infection is introduced here first of all, then the infectious process becomes chronic, then the process of cell division is disrupted and oncology arises.

One of the main goals of all Eastern practices - yoga, Tai Chi Chuan and others - is to restore the correct movement of Qi along the energy centers and meridians ("open the

chakras", "unblock the meridians"). The competent use of a quantum generator allows anyone to achieve the same goal without necessarily getting into the jungle of Eastern techniques. With regular use of the generator, after a while you will feel a surge of new energy filling you to restore vitality.

This restored the correct work of the chakras and meridians, the foci of stagnation of energy, blood and lymph circulation in the body began to disappear. With the help of the generator, you can control and direct the flow of energy to those parts of the body where you feel discomfort or pain.

3. BLOOD VESSELS AND CELLULITE. On areas where there are twisting or dilated veins, vascular "stars", dark spots and ulcers on the skin as a result of malnutrition with venous insufficiency, thrombophlebitis, edema (in the first mode, "less bright"). After several sessions (4-5), the skin brightens, ulcerative defects begin to heal, and the swelling decreases. The heaviness in the legs and fatigue disappear by the end of the day, the vascular "stars" are removed. Lymphatic drainage improves, edema and lymphostasis disappear or decrease, the surface of the skin can be smoothed with cellulite.

4. JOINTS. On problem joints and sections of the spinal column (in the 2nd mode - "brighter"): After a while, pain and discomfort in the joints and spine will significantly decrease or disappear. The range of motion in the joints and spine increases.

5. VISION ORGANS. On the organs of vision (in a blinking mode, with the eyelids closed, the impact on the occipital protuberances): After several sessions (depending on the initial state), the clarity and contrast of visual perception improves. There was a case when, after a complete loss of vision as a result of a surgical operation to remove a brain tumor while using a quantum generator, the patient began to distinguish between light and darkness, to see the vague outlines of people and objects.

6. INTERNAL ORGANS. On internal organs (liver, pancreas, etc.) in the first mode ("less bright"): The generator is located in the place of the organ projection. As a result of its effect, the blood supply to the organ improves, the supply of cells and tissues with oxygen and nutrients is normalized, and toxins and metabolic products are removed more effectively. All this contributes to the normalization of organ function.

LON TERM EFFECTS:

7. The volume of operational and long-term memory increases

8. DETOX. Cleansing the body after the first week of taking a session (more frequent than usual urination, loose stools in the morning). And it turns out that this procedure provides greater effect than just external rejuvenation

10. Healing from various diseases (from cold to genetic diseases)

11. Dramatic change in life circumstances. This effect is solely on the mental body, and during the impact, it takes into itself: and the energy of light as such is without refraction; and digital codes of different colors; and serious powers of healing thought forms.

STUDIES:

Tension headache (THE) is described by patients as pressing or squeezing sensations in the head area, as if a tight hoop is put on the head that cannot be removed. At the same time, tension headache can manifest itself not only in one place, but also migrate to different areas, spreading even to the neck and shoulders. Headache can manifest itself in different ways: it can take on a squeezing, aching or sharp character, accompanied by ringing in the ears or bouts of nausea. This manifestation is caused by various reasons. There is such a type of cephalalgia as chronic tension headache (HDN).

These are daily unpleasant sensations in the head area, capturing two of its sides and localized in the occipital-frontal part. The invention relates to bioenergetic means, in particular, to medical equipment, to devices for bioenergetic, for example, physiotherapeutic effects on a biological object with radiation.

Bioenergy is a group of energy transformation processes that take place in the body of living subjects and are responsible for their vital activity. The study of bioenergetic processes is of great importance, since most human diseases are closely related to an imbalance in energy metabolism. It was revealed that under the influence of electromagnetic waves of the centimeter range of low intensity, both the physiological characteristics of bacterial cultures (accumulation of biomass, respiration rate, survival) change, and the productivity of assimilation of substrates and the growth of biomass increase.

The present technical solution of the proposed device for magnetic-light bioenergetic effects can be used in the treatment of chronic tension headaches and the treatment of other human diseases. Compared to laser devices, this LED Qlight generator has increased therapeutic efficiency, is compact, easy to maintain, and is available to the general population for the treatment of diseases at home, which together gives them a significant competitive advantage.

The functional capabilities of the therapy and prevention of serotonin deficiency, as well as the operational impact on the patient's mood (weakening depression, anxiety, activation of positive emotions) have been expanded. The device allows for the treatment of diseases of other etiologies due to the multifactorial effect on smooth myocytes in the wall of microvessels, change the rheological properties of blood and its micro-circulation, activate redox processes, accelerate blood flow, reduce intravascular aggregation of erythrocytes and perivascular edema.

The radiation source 1 for the claimed device as a medical device has the therapeutically most significant frequencies - the radiation wavelength is 630 - 950 nm, the half-width of the radiation pattern is 20 ° - 30 ° with a radiation flux density of about 20 mW / cm².

According to the World Health Organization, chronic tension headaches are among the most common disorders of the nervous system. Over the past year, WHO estimates that nearly half of adults have experienced a headache at least once. Regular chronic pain is associated with personal and social burden, disability, reduced quality of life, and financial problems. Globally, only a small proportion of people with headaches are diagnosed with CGBD ...

This disease, being a type of daily headaches, is diagnosed if the characteristic manifestations bother a person for more than 15 days a month and more than 180 days a year. If pain occurs less frequently, then we are talking about episodic pain. All over the world, headache is underestimated, not recognized, and not adequately treated. As a result, up to 4% of the world's adult population suffers from chronic tension pain lasting 15 days or more every month.

According to statistics, chronic headache worries women 5-6 times more often than men. This pathology affects not only adults, but also children. Headaches are a worldwide problem that affects people regardless of age, race, income level and geographic area (WHO. Headaches, http://www.who.int/topics/headache_disorders/en/

When treating chronic tension headache, the problem cannot be dealt with with pain relievers without harm to health. Experts say that such drugs only complicate the task of relieving pain. The main method of reducing the intensity of pain syndrome from CHHD is long-term, at least 2-3 months, drug treatment with antidepressants, which have numerous side effects !!!

The therapeutic effect with the Qlight generator is achieved when the patient is up to 50 cm away from the claimed device with a recommended exposure time of up to 10 minutes. Qlight generator is a new device for a person skilled in the art, a therapeutic agent for non-drug therapy of CGBN with the possibility of industrial implementation of new medical technology.

Qlight generator provides therapy and / or prevention of serotonin deficiency with a multifactorial effect on smooth myocytes in the wall of microvessels, improving blood microcirculation, activating redox processes, reducing intravascular aggregation of erythrocytes and perivascular edema. These data served as the basis for the use of Qlight generator in the treatment of chronic tension headache.

The content of serotonin in plasma in CHHD and its deficiency are a marker of the intensity of headache and depression. It was found that the intensity of headache is tested by the level of serotonin in the peripheral blood of patients. Evaluation of the results of therapy is based on objective registration of the intensity of chronic pain by determining the quantitative content of serotonin in the blood using the enzyme-linked immunosorbent assay with the Serotonin-Elisa test system (IBL-Hamburg).

Studies of the Department of Neurology of the Russian State Medical Academy have established that the concentration of serotonin in blood serum of 230 and higher ng / ml corresponds to the absence of pain. A decrease in serum serotonin concentration in the range of 180-230 ng / ml is characteristic of mild pain syndrome, which corresponds to the intensity of pain according to the international visual analogue scale (VAS) - 0-40 cm.

Serum serotonin concentration from 130 ng / ml to 180 ng / ml corresponds to moderate pain of moderate intensity (50-60 cm according to VAS). The serum serotonin content below 130 ng / ml characterizes pain of high intensity (70-100 cm according to VAS). Practical testing has confirmed that Qlight generator allows patients without proper qualifications to independently treat CGHD at home and has, at the same time, anti-inflammatory and analgesic effects, without side effects.

Qlight generator is a compact device designed with extreme simplicity, technical excellence, high reliability and safety. This substantiates the successful and safe use of the Qlight generator, as opposed to antidepressant medication, which has numerous side effects.

Currently, most of the methods for assessing pain syndrome are based on the interpretation of the statements of the patients themselves. The most common are the so-called "visual analogue pain scales", which propose to determine pain by the length of the segment indicated by the subject between the points "no pain" and "unbearable or maximum pain". When using a visual analogue scale (VAS), the patient is asked to make a mark on this line corresponding to the intensity of pain at the moment. Annotation written along the line (eg, "mild, moderate, severe") can help in assessing pain.

The distance between the end of the line ("no pain") and the mark made by the patient is measured in centimeters and rounded. The different variations of the YOUR are called the graphical rating scale. The simplest way to measure pain is with a digital rating scale. To assess pain, the patient is offered a scale with a graduation from 0 to 100. The patient notes the number that, in his opinion, most corresponds to the strength of the pain he is experiencing. When analyzing the severity of pain in the studied patients, the following gradation of pain severity was adopted: mild pain - (10-

40) points (on a digital rating scale from 0 to 100 points), moderate pain (50-60 points), severe pain (70-100 points). The gradation is based on the presence of the boundaries of the categories of pain severity, at which there are qualitative and quantitative changes in the nature of the influence of pain on the main parameters of the quality of life.

To further assess the reliability of treatment results, all patients were interviewed in accordance with the standard international questionnaire "SF-36 Health Status Survey" (SF-36), which refers to non-specific questionnaires for assessing the quality of life, it is widely used and used in the USA and European countries when conducting research on the quality of life. The 36 items on the questionnaire are grouped into eight scales: physical functioning, role-playing activity, bodily pain, general health, vitality, social functioning, emotional state, and mental health.

The scores on each scale range between 0 and 100, with 100 representing overall health, and all scales form two measures: mental and physical well-being. The results of examinations of patients before and after treatment are presented in the form of scores on 8 scales, designed in such a way that a higher score indicates a higher level of quality of life. The following indicators are quantified:

1. Physical Functioning (PF), reflecting the degree to which the physical condition limits the performance of physical activities (self-care, walking, climbing stairs, carrying weights, etc.). Low scores on this scale indicate that the patient's physical activity is significantly limited by the state of his health.
2. Role-Physical Functioning (RP) - the impact of physical condition on daily role-playing activities (work, daily duties). Low scores on this scale indicate that daily activities are significantly limited by the patient's physical condition.
3. The intensity of pain (Bodily pain - BP) and its effect on the ability to carry out daily activities, including work around the house and outside the home. Low scores on this scale indicate that pain significantly limits the patient's activity.
4. General health (GH) - assessment of patients' state of health at the moment and the prospects for treatment. The lower the scores on this scale, the lower the health score.
5. Vitality (VT) means feeling full of strength and energy, or, on the contrary, exhausted. Low scores indicate patient fatigue, decreased vitality.
6. Social Functioning (SF), defined by the degree to which a physical or emotional state limits social activity (communication). Low scores indicate a significant limitation of social contacts, a decrease in the level of communication due to a deterioration in the physical and emotional state.
7. Role functioning due to the emotional state (Role-Emotional - RE) involves an assessment of the degree to which the emotional state interferes with the performance of work or other daily activities (including a large amount of time, a decrease in the volume of work, a decrease in its quality, etc.). Low scores on this scale are interpreted as a restriction in the performance of daily work due to a deterioration in the emotional state.
8. Mental health (MH), characterizes the mood, the presence of depression, anxiety, a general indicator of positive emotions. Low indicators indicate the presence of depressive, anxious experiences, mental distress. The scales are grouped into two indicators "physical health component" and "psychological health component":
 1. Physical health component (PH) Components of the scale:
 - Physical functioning,
 - Role functioning due to physical condition
 - Intensity of pain
 - General health
 2. Psychological component of health (Mental Health - MH) Scale components:
 - Mental health
 - Role functioning due to emotional state
 - Social functioning
 - Life activity

As a practical test of the claimed device, 21 patients were examined who consulted a neurologist for chronic tension headache, for the treatment of which a Qlight generator was used. Among the examined were 12 women and 9 men, the median age was 25

years. Clinical evaluation of the course of treatment showed high efficiency of the procedure. A pronounced positive effect was obtained in all patients. After 7 procedures, each of which lasted 10 minutes for 7 days, patients with CHHD showed an improvement in general well-being, headaches subsided, in most cases dizziness decreased, sleep improved, and the ability for prolonged physical and mental work increased.

The serotonin content in the peripheral blood serum of patients was determined using an enzyme-linked immunosorbent assay using the Serotonin-ELISA test system (IBL, Hamburg). Material for the study was taken in the interictal period in the morning hours against the background of the best state of health. The group of patients with the chronic course of CGBI consisted of patients with a history of typical headache attacks, gradual transformation into a chronic form with a frequency of headache attacks 18 days a month.

The results of a study of the serotonin level in patients with chronic CGBN in the blood serum tended to decrease in comparison with that in the group of healthy individuals, for whom the characteristic serotonin level in serum is from 230 ng / ml and above to 350 ng / ml. It was found that in CHHD, the indicators of the degree of anxiety-depressive disorders and the intensity of pain are closely interrelated with a decrease in the level of serotonin in the blood serum.

Table 1 shows the indicators of the clinical assessment of the results of the use of Qlight generator, confirming the effectiveness of its use.

Таблица 1

Показатели	До лечения	После лечения
Интенсивность боли по Ваш,	52, 6 ± 14, 1	15,4 ± 1, 05
Физический компонент здоровья (PH), %	41, 92 ± 5, 33	73, 09 ± 5,3
Физическое функционирование (PF), %	62, 5 ± 18,5	77,3 ± 12,8
Ролевое физическое функционирование (RP),%	31,2 ± 31,04	56,25 ± 19,8
Боль (ХГБН), %	47, 19 ± 11,9	66,7 ± 5,8
Общее здоровье (GH), %	52,2 ± 15,1	70,6 ± 12,1
Жизнеспособность (VT), %	47,9 ± 13,4	72, 25 ± 5,6
Социальное функционирование (SF), %	64, 6 ± 16,9	71, 5 ± 13,2
Эмоциональное функционирование (RE), %	33,3 ± 23,1	66,7 ± 11,3
Психологическое здоровье (MH), %	41,2 ± 11,1	59,5 ± 6,3
Серотонин сыворотки крови, нг/мл	165,15 ± 46,6	232,8 ± 41,9

The use of the proposed device for assessing the intensification of the growth of the microbiota (microbioma) of a person was carried out as follows. The effectiveness of the Qlight generator was carried out by evaluating the effect of the device on the intensification of the growth of human microbiota, in which approximately 95% of serotonin is synthesized.

Bifidobacteria occupy a special place among various representatives of normal human microflora. The human microbiocenosis normally consists of 85-98% of bifido bacteria. It is the bifido flora that plays a leading role in the maintenance and normalization of intestinal microbiocenosis, nonspecific resistance of the organism in the epigenetics of neurodegenerative diseases. All representatives of the genus Bifidobacterium are gram-positive, immobile, non-spore-forming, do not form gases in the process of life, anaerobic, catalase-negative, saccharolytic microorganisms.

All of them are chemoorganotrophs, actively fermenting hydrocarbons with the formation of mainly acetic and lactic acids in a molar ratio of 3: 2, they do not form CO₂. Some species can grow in an atmosphere enriched with up to 10% CO₂. Their growth stops at pH below 4.5 or above 8.5.

These properties create the prerequisites for expanding the scope of Qlight generator devices to increase the efficiency of the introduction of biotechnology in the processing and processing of metal-containing ores due to the significant advantages of such technologies in terms of economic efficiency and environmental safety.

Data on the growth properties of control and irradiated test cultures of Bifido bacterium bifidum, strain VKPM-4231, obtained on Petri dishes, were recorded. Test cultures were irradiated 2 times a day for 30 minutes for 3 days. In the control and irradiated Petri dishes, 5 samples were taken and the number of colony-forming units in one ml of the test sample (CFU / ml) was determined.

Conclusion: According to the results of the laboratory experiment, it can be seen that the optical density (OD) of the biomass irradiated with the Qlight generator, as well as the number of colony forming units in one ml of the test samples (CFU / ml), is on average 85% higher. This indicates that the radiation from the Qlight generator significantly affects the growth of the biomass of the Bifido bacterium bifidum strain, and has a greater intensity.

The lowest OD was noted in an unirradiated flask stored under the same conditions. The maximum biomass gain was obtained using Qlight generator. The claimed device has a simple design and is easy to assemble, allows to significantly intensify the growth of microorganisms, for example, the biomass of the Bifido bacterium bifidum strain. Qlight generator is easy to use and also expands therapy functionality.



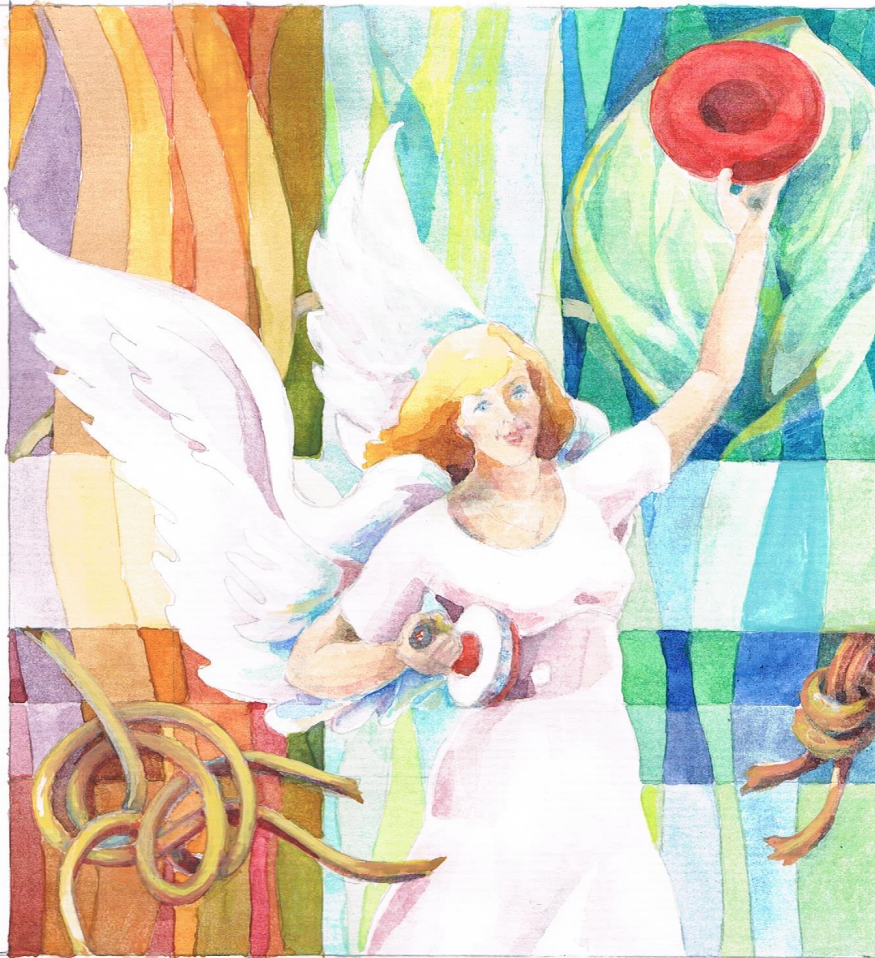
Т. Перова

Figure 1. "Shackled with one chain". The generator is off. The formation of accumulations of red blood cells, "chained by one chain", suppresses metabolism in tissues, causes oxygen deficiency and generates unbearable pain. The morbid condition is the "No One No Cable" red blood cells.



Т. Перова

Figure 2. "I am free ..." The generator is on. Red blood cells move freely through the vessels, providing adequate nutrition for diseased tissues, the pain goes away. "I'm free like a bird in the sky I am free, I have forgotten what fear means. I am free - with the wild wind on par I am free in reality, not in a dream! I have - silence, A sky full of fire The light passes through me."



Т. Перова

Figure 3. "Portal heart". Directing the light of the generator to the liver area starts the work, the so-called. "Portal heart", the second blood vessel, cleansing us of toxins. The liver, occupying a central place in the regulation of the blood flow of the abdominal organs, in addition to many functions essential for the whole body and cleansing us of toxins, performs one more: the vascular system of the liver is an additional pump (the main pump of the circulatory system - the heart), pumping blood from the main abdominal organs cavity into the common venous bed. This is a 30-40% share of the total blood flow in the norm and 50-70% at increased loads. Such a "portal heart" (that is, associated with the portal vein, from the Latin portalis-gateway) greatly facilitates the liver to perform its multifaceted functions and restores the liver's function, undermined by the intake of numerous drugs, low-quality products and poor ecology.